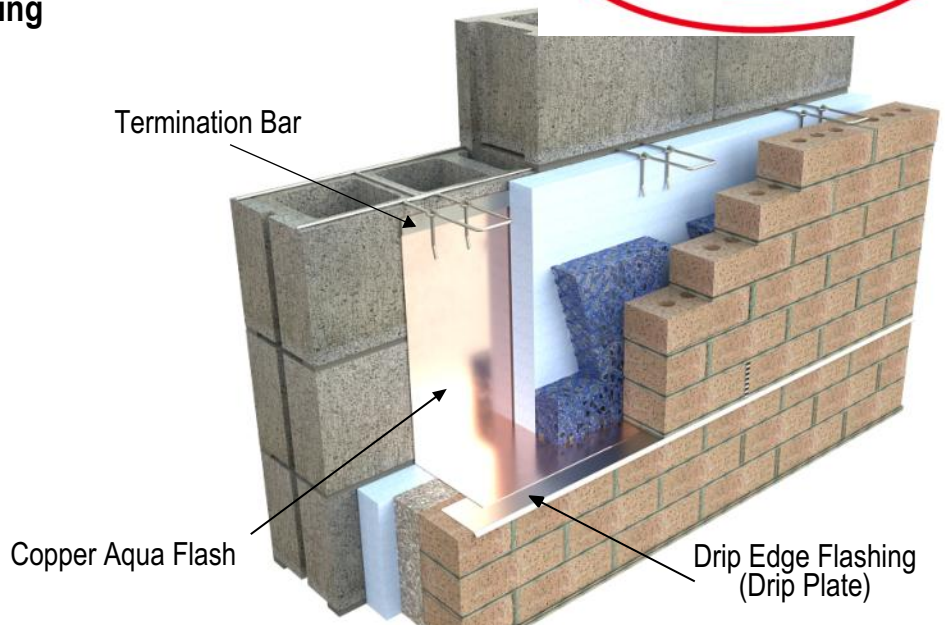
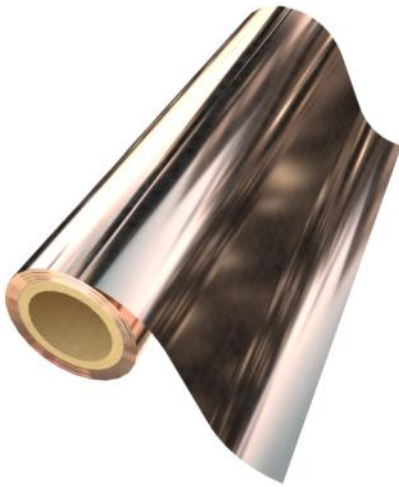


PRODUCT SUBMITTAL

4130 Copper Aqua Flash S.A. Self-Adhering 3oz. Composite Flashing

WIRE-BOND



Note: A Termination Bar is required for surface-mounted applications.

Description: A 50 mil. composite flexible flashing consisting of 3 ounce solid sheet of annealed copper which is laminated on one side with a polyester film and coated on the other side with a highly adhesive SBS modified bitumen with a silicone release liner. By completely encapsulating the copper with film on one side and rubberized asphalt on the other, the copper is protected from any alkalis or acid attack. The already applied rubberized asphalt (40 mils) eliminates not only any areas of non-adhesion when the material is pressed into place, but also enhances the longevity and waterproofing characteristics of the COPPER AQUA FLASH.

Technical Data:

Property	Avg. Values	Test Method
MVT	0.02 grains max/sq. /ft./hr. in HG	ASTM E96
Water Absorption	1% by weight max.	ASTM D570
Pliability @ 180° bend over 1/2" Mandrel or peel	to -30°F no crack	ASTM D146
Tensile Strength - Copper	31,500 psi	ASTM D882
Tensile Strength (membrane/film)	800 psi	ASTM D412 (Die C)
Water Resistance	>30 hr.	ASTM D779
Puncture Resistance	90 lbs. min.	ASTM E154
Material Thickness	50 mils Nom.	ASTM D1970
Pliability	pass	ICC-ES AC 38
Nail Seal-ability-AMMA	pass	ASTM D1970

Features and Benefits:

- Self-sealing
- Excellent puncture resistance
- High temperature stability

Applications:

- Thru-Wall Flashing
- Concealed flashing
- Foundation Sill Flashing
- Base Flashing
- Spandrel Flashing
- Head and Sill Flashing
- Parapet Flashing

The Copper Aqua Flash S.A. membrane can be applied as part of a system using AQUA FLASH Primer and AQUA flash Mastic. COPPER AQUA FLASH can be applied to masonry, concrete, concrete block, brick, metal, wood, plywood, and OSB.

Copper Aqua Flash S.A.

Width: ☐ 12" ☐ 16" ☐ 18" ☐ 24" ☐ 36" (50 lf rolls)

Accessories:

- ☐ #4198R WB Flashing Mastic Sealant - 30 oz. cartridge / 5 gallon pail
- ☐ #4121R Aqua Flash Mastic Sealant - 32 oz. cartridge / 5 gallon pail
- ☐ #4121W Aqua Flash Primer Water Based - 5 gallon pail
- ☐ #4121S Aqua Flash Primer Solvent Based (Winter Grade) - 5 gallon pail

Quik Set Sealant

Termination Bar (Required):

- ☐ #4200 Stainless Steel ☐ #4200 PVC 28 oz. cartri
- ☐ #4210 Stainless Steel with Flange Top for Sealant

Corners & End Dams:

Finish: ☐ Stainless Steel ☐ Copper

- ☐ #4194 End Dam ☐ #4196 Inside Corner ☐ #4196 Outside Corner

Drip Edge Plate Flashing:

Finish: ☐ Stainless Steel ☐ Copper

- Size: ☐ 3" width ☐ 1-1/2" width ☐ #4165 Drip Edge Flashing (8'-0" Length)
☐ #4166 Inside Drip Edge Corner ☐ #4166 Outside Drip Edge Corner

Weeps & Vents:

- ☐ #3601 Cell Vent ☐ #3603 Clear Rectangular Vent
- ☐ #3602 Louvered Weephole

Mortar Suspension:

- ☐ #3611D Cavity Net DT 1" ☐ #3611D Cavity Net DT 2"

Corporate Office: 400 Rountree Rd Charlotte, NC 28217
TEL: (800) 849-6722 FAX: (704) 525-3761

Mailing Address: P.O. Box 240988 Charlotte, NC 28224

WIRE-BOND

Memphis Plant: 2365 Harbor Ave. Memphis, TN 38113
TEL: (800) 441-8359 FAX: (901) 775-9449

Mailing Address: P.O. Box 13124 Memphis, TN 38113

www.wirebond.com